

PART OF THE SE.1/4, OF SECTION 10, T.5N., R.1W., S.L.B. & M.

347

# REFLECTION RIDGE

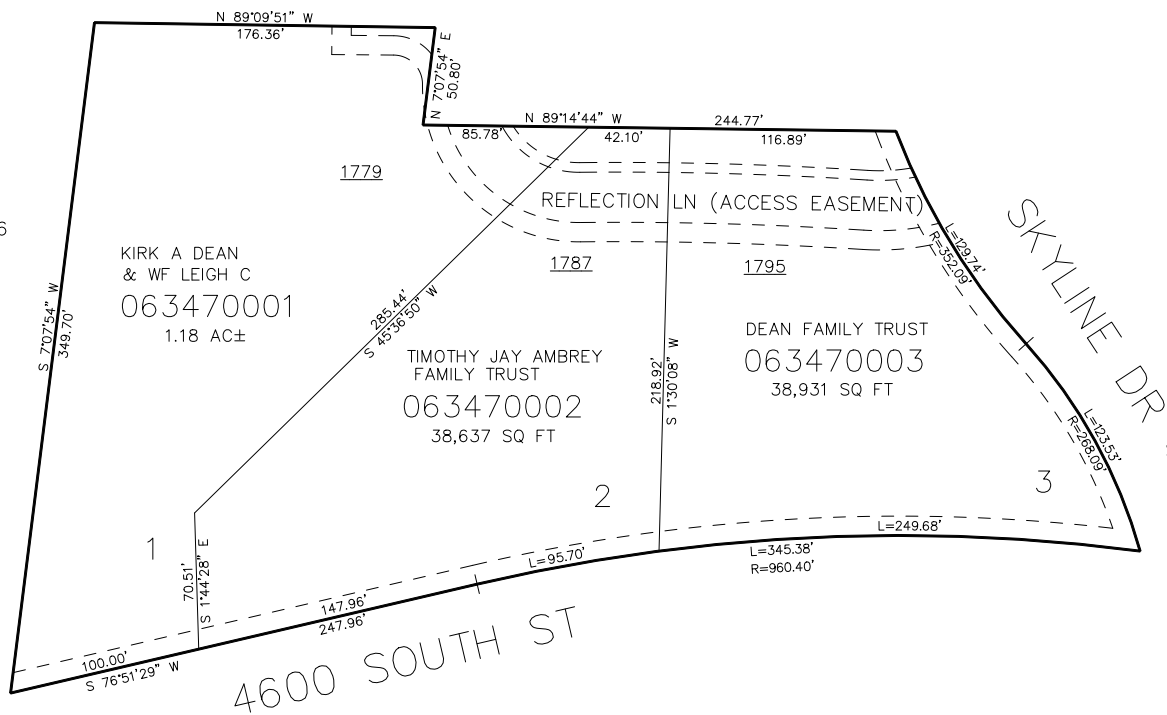
IN OGDEN CITY

TAXING UNIT: 25

SCALE 1" = 50'

SEE PAGE 96

SEE PAGE 96



SEE PAGE 96

SEE PAGE 96

10' UTILITY & DRAINAGE EASEMENTS EACH  
SIDE OF PROPERTY LINES AS INDICATED  
BY DASHED LINES EXCEPT AS OTHERWISE  
SHOWN.

FOR COMPLETE ENC DATA SEE  
ORIGINAL DEDICATION PLAT IN  
BOOK 92, PAGE 48 OF RECORDS.